



**NAMIBIA UNIVERSITY
OF SCIENCE AND TECHNOLOGY**

FACULTY OF COMPUTING AND INFORMATICS

DEPARTMENT OF INFORMATICS, JOURNALISM AND MEDIA TECHNOLOGY

QUALIFICATION : Bachelor of Information Technology (Business Computing) Bachelor of Informatics	
QUALIFICATION CODE: 80BSBC / O7BAIF	COURSE LEVEL: NQF LEVEL 7
COURSE: Enterprise Resource Planning Systems	COURSE CODE: ERP720S
DATE: July 2022	SESSION: 2
DURATION: 2 Hours	MARKS: 70

SECOND OPPORTUNITY/SUPPLEMENTARY EXAMINATION QUESTION PAPER	
EXAMINER(S):	Dr Edmore Chikohora Mr Johnson Billawer
MODERATOR (S):	Dr Victoria Hasheela-Mufeti

**THIS EXAMINATION PAPER CONSISTS OF 6 PAGES
(INCLUDING THIS FRONT PAGE)**

Instructions for the students

- 1. Answer ALL the questions.**
- 2. Write clearly and neatly.**
- 3. Number the answers clearly.**





SECTION A: Multiple Choice Questions. Marks for each question are shown at the end.

[Total Marks 20]

1. Which database does the SAP S/4HANA ERP system runs on? **[1 Mark]**

- A. SAP R/3
- B. SAP HANA
- C. S/4HANA
- D. SAP R/1

2. Which of the following icons represent the SAP logo on the SAP S/4HANA Fiori Launchpad? **[1 Mark]**

- A. 
- B. 
- C. 
- D. 

3. Which of the following modules is part of ERP II (ERP 2nd generation)? **[1 Mark]**

- A. Logistics
- B. MRM
- C. CRM
- D. Sales and Distribution

4. You are describing ERP Business Cases. Which two (2) statements are the most correct. **[2 Marks]**

- A. ERP benefits are often underestimated
- B. ERP costs start accruing after implementation
- C. Implementation services are often the bulk of the costs
- D. ERP software costs include ongoing maintenance costs

5. One of the important control in purchasing is having an approved supplier list that is primarily used for sourcing products. Having an approved supplier list can help in protecting the organisation from the following risks. There are two (2) correct answers. **[2 Marks]**

- A. Purchasing products of inferior quality

- B. Purchasing at inflated prices
 - C. Purchasing items that are not needed
 - D. Unauthorised disclosure of sensitive information
 - E. Mistakes in posting to accounts payable
6. The SAP S/4HANA system contains many organizational levels, which are responsible for particular functional areas. Which of the following organizational units are relevant only for the Procure-to-Pay business process? There are two (2) correct answers. **[2 Marks]**
- A. Purchasing organisation
 - B. Storage location
 - C. Company code
 - D. Plant
 - E. Purchasing group
7. You are describing the advantages of a stock transport order. Which three (3) statements are the most correct. **[3 Marks]**
- A. A Purchase requisitions can be converted into a stock transport orders.
 - B. You can enter delivery charges in the stock transport order.
 - C. The goods issue for the transport order can be posted to unrestricted-use stock, stock in quality inspection or to blocked stock.
 - D. The goods movements for a stock transport order can be monitored via the PO history.
8. You are explaining transactions which can impact a company's assets. Which two (2) postings are the most correct? **[2 Marks]**
- A. Purchase requisitions
 - B. Sales orders
 - C. Goods receipts
 - D. Customer invoices
9. You are explaining how the procurement cycle in SAP S/4HANA integrates with SAP Financial Accounting to a colleague. Which procurement cycle business transaction in SAP S/4HANA creates a financial accounting document? There are three (3) correct answers. **[3 Marks]**
- A. Create a vendor master record

- B. Post a goods receipt with change in material valuation
- C. Create vendor payment
- D. Create a purchase requisition
- E. Enter an invoice receipt

10. You are explaining the negative impacts of not managing inventory. Which two (2) statements are not relevant here. **[2 Marks]**

- A. Poor profit margins
- B. Inaccurate cash flow reports
- C. Lost sales
- D. Production delays

11. The following organizational data are required when creating a sales order EXCEPT FOR:

[1 Mark]

- A. Division
- B. Sales organization
- C. Distribution channel
- D. Customer number
- E. Company code

SECTION B: Structured Questions. Marks for each question are shown at the end.

[Total Marks 50]

QUESTION 1

[20 Marks]

A) Read the scenario provided below and answer the questions that follow;

First National Bank (FNB) is a large bank in the banking industry originating from South Africa with subsidiaries in many other African countries. In Namibia FNB has several branches in almost every region. Assume that FNB Namibia management is considering implementing the SAP S/4HANA ERP system across all its branches.

- i) Discuss the six (6) phases of the Information Technology Infrastructure Library (ITIL) application management process that FNB Namibia needs to follow when implementing its ERP system. **[12 Marks]**

- ii) Discuss any four (4) ERP implementation service costs that FNB Namibia need to consider when implementing an ERP system. [8 Marks]

QUESTION 2

[15 Marks]

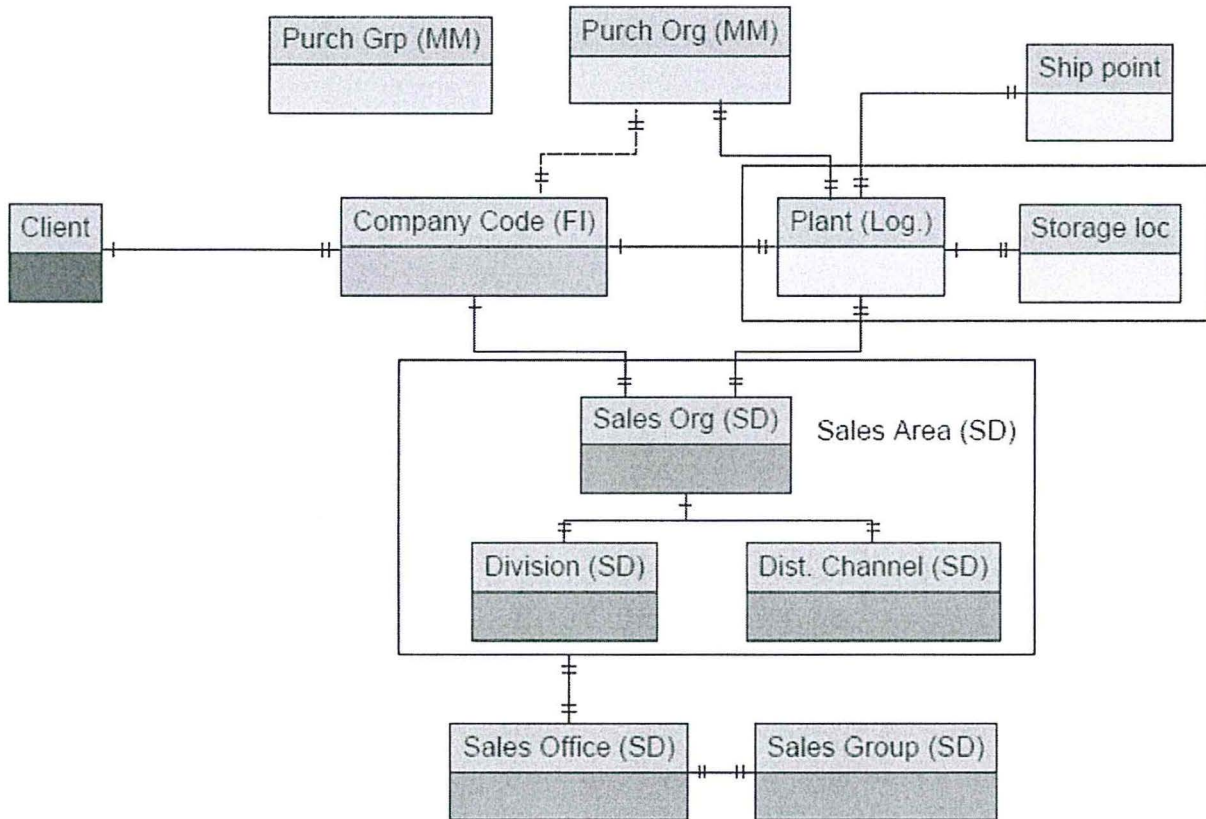


Figure 1

Analyze figure 1 and answer the questions that follows:

- A) What does Figure 1 represent? [1 Mark]
- B) Explain the relationship between Client and Company Code in Figure 1. [2 Marks]
- C) Plant and Storage locations are enclosed in one rectangle box. Explain what this mean in the business context. [2 Marks]
- D) Refer to Figure 1 and state the elements that will be part of the Inventory Management process. [2 Marks]
- E) Briefly discuss the four (4) ERP data types that are included in the business/organisation blue print. [8 Marks]

QUESTION 3

[15 Marks]

- A) State and explain any three (3) different stock types found in an SAP S/4HANA ERP system. **[6 Marks]**
- B) Most goods movement update financial accounting. However, there are situations where goods movement will not impact financial accounting. Provide four (4) situations where goods movement will not update financial accounting. **[4 Marks]**
- C) What typical documents are created on the ERP system as part of the Procure-to-Pay process. Provide at least 6 documents. **[2 Marks]**
- D) On the SAP S/4HANA ERP system which tool can be used to display documents that has been processed as part of the purchasing document? **[1 Mark]**
- E) How can the general risks encountered in the procurement process be eliminated? Explain the controls that can be enforced. **[2 Marks]**

THE END OF EXAM

